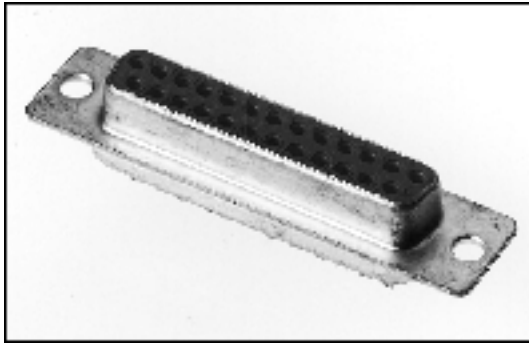


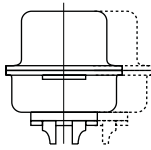
CABLE-TO-BOARD CONNECTORS

D-SUBMINIATURE CONNECTORS



Turned contacts for high reliability.
 Stamped contacts for cost reduction.
 Tin plated and dimpled shells.
 Chromate version available on request.
 Accessories on page D76 and D77 can be specified.

Solderbucket, Stamped Contacts

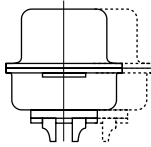


Contact material:
Plug: Brass
Socket: Phosphor bronze
Contact: Gold plated
Shell: Tin plated
Contact current: 1 AMP
Contact resistance: 10 Milliohms max.
Operating temperature: -55°C to 105°C
Insulation resistance: 5000 Megohms min.
Insulation material: Glass-fibre Polyester UL94-V0

Ordering Information

No. of pins	Plug	Socket
9	WKD-S09PG	WKD-S09SG
15	WKD-S15PG	WKD-S15SG
25	WKD-S25PG	WKD-S25SG
37	WKD-S37PG	WKD-S37SG
50	WKD-S50PG	WKD-S50SG

Solderbucket, Turned Contacts

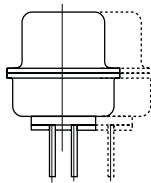


Contact resistance: Below $5 \times 10^{-3} \Omega$
Insulation resistance: Over 10M Ω
Temperature range: -55°C to +125°C
Working current: 5 A per contact with 20 AWG cable
Working voltages: 300 V RMS
Test voltage: 1000 V RMS
Materials and finishes: .. Steel nickel plated & tinned
Insulators: Polyester, glass fibre reinforced, UL 94-V0
Contacts: Copper alloy gold plated over nickel
Insertion Cycles: 500

Ordering Information

No. of pins	Plug	Socket
9	DP09Z	DS09Z
15	DP15Z	DS15Z
25	DP25Z	DS25Z
37	DP37Z	DS37Z
50	DP50Z	DS50Z

Solderspill, Stamped Contacts

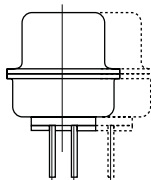


Contact material:
Plug: Brass
Socket: Phosphor bronze
Contact: Gold plated
Shell: Tin plated
Contact current: 1 AMP
Contact resistance: 10 Milliohms max.
Operating temperature: -55°C to 105°C
Insulation resistance: 5000 Megohms min.
Insulation material: Glass-fibre Polyester UL94-V0

Ordering Information

No. of pins	Plug	Socket
9	WKD-N09PG	WKD-N09SG
15	WKD-N15PG	WKD-N15SG
25	WKD-N25PG	WKD-N25SG
37	WKD-N37PG	WKD-N37SG
50	WKD-N50PG	WKD-N50SG

Solderspill, Turned Contacts



Contact resistance: Below $5 \times 10^{-3} \Omega$
Insulation resistance: Over 10M Ω
Temperature range: -55°C to +125°C
Working current: 5 A per contact with 20 AWG cable
Working voltages: 300 V RMS
Test voltage: 1000 V RMS
Materials and finishes: .. Steel nickel plated & tinned
Insulators: Polyester, glass fibre reinforced, UL 94-V0
Contacts: Copper alloy gold plated over nickel
Insertion Cycles: 500

Ordering Information

No. of pins	Plug	Socket
9	DP09Y	DS09Y
15	DP15Y	DS15Y
25	DP25Y	DS25Y
37	DP37Y	DS37Y
50	DP50Y	DS50Y



SELWYN ELECTRONICS
 PHONE: 01732 - 765100