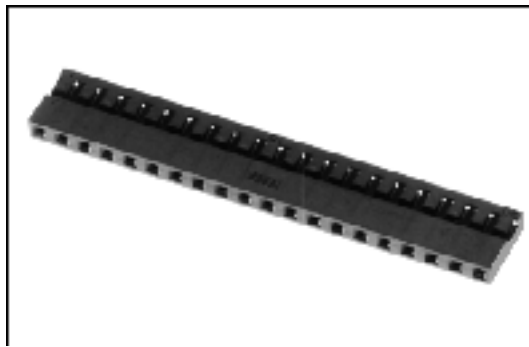
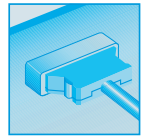


CABLE-TO-BOARD CONNECTORS

2mm PITCH



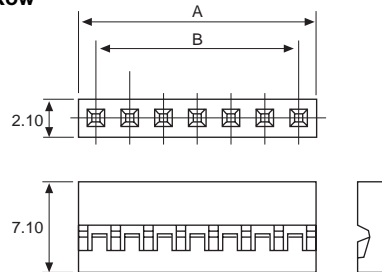
Technical Information

Material: Glass-filled thermoplastic UL94-VO
Contacts: Phosphor bronze
Contact resistance: 20mΩ max.
Withstanding voltage: 500V ac rms at 50Hz

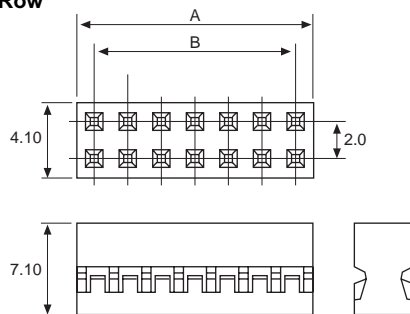
A range of single and double row crimp housings from 2 to 40 ways.
 Accepts crimp poke-home contacts supplied loose or on reels.
 Interates with pin headers shown on pages B27-29 & B32.

Double Row, Crimp Housing (Harwin)

Single Row



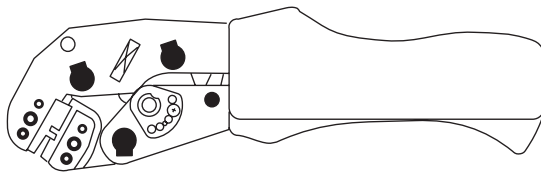
Double Row



Ordering Information

Pstns. per Row	Single Row	Double Row	A	B
2	M22-3010200	M22-3020200	4.00	2.00
3	M22-3010300	M22-3020300	6.00	4.00
4	M22-3010400	M22-3020400	8.00	6.00
5	M22-3010500	M22-3020500	10.00	8.00
6	M22-3010600	M22-3020600	12.00	10.00
7	M22-3010700	M22-3020700	14.00	12.00
8	M22-3010800	M22-3020800	16.00	14.00
9	M22-3010900	M22-3020900	18.00	16.00
10	M22-3011000	M22-3021000	20.00	18.00
11	M22-3011100	M22-3021100	22.00	20.00
12	M22-3011200	M22-3021200	24.00	22.00
13	M22-3011300	M22-3021300	26.00	24.00
14	M22-3011400	M22-3021400	28.00	26.00
15	M22-3011500	M22-3021500	30.00	28.00
16	M22-3011600	M22-3021600	32.00	30.00
17	M22-3011700	M22-3021700	34.00	32.00
18	M22-3011800	M22-3021800	36.00	34.00
19	M22-3011900	M22-3021900	38.00	36.00
20	M22-3012000	M22-3022000	40.00	38.00

Double Row, Crimp Contact & Tooling (Harwin)



Crimp Contacts:

Twin-leaf, phosphor bronze contacts, supplied loose or on reels (10,000 contacts per reel).

Choice of tin or selective gold plating.

Accepts wires 28 to 30 AWG.

Contacts are rear-insertable, rear removable in housings.

Ordering Information

Finish	Loose Contacts	Reeled Contacts
Tin	M22-3050006	M22-3040006
Gold	M22-3050022	M22-3040022

Ordering Information

Tool	Part Number
Electric Crimp Machine	Z20-300
Die Set	Z22-002
Hand Crimp	Z22-001

SELWYN ELECTRONICS

PHONE: 01732 - 765100

